



# Comparison of Interventional Strategies Implemented to Manage High Risk Pregnancies in Terms of Their Efficacy at United States of America: A Systematic Review

Monica Isuan Idugboe <sup>a</sup>, Nneka Josephine Umeh <sup>b</sup>,  
Omowunmi Rachael Adewara <sup>c</sup>, Sanu Jarjusey <sup>d</sup>  
and Okelue Edwards Okobi <sup>e\*</sup>

<sup>a</sup> Department of Obstetrics and Gynecology, American University of Barbados, St. Michaels, Barbados.

<sup>b</sup> Department of Family Medicine, University of Maryland Capital Region Health, Largo, United States.

<sup>c</sup> Department of Obstetrics and Gynecology, Newham University Hospital, London, United Kingdom.

<sup>d</sup> Department of Obstetrics and Gynecology, School of Medicine and Allied Health Sciences, University of The Gambia, Madison, United States.

<sup>e</sup> Department of Family Medicine, Larking Community Hospital, Palm Spring Campus, Miami, FL, USA.

## Authors' contributions

*This work was carried out in collaboration among all authors. All authors read and approved the final manuscript.*

## Article Information

### Open Peer Review History:

This journal follows the Advanced Open Peer Review policy. Identity of the Reviewers, Editor(s) and additional Reviewers, peer review comments, different versions of the manuscript, comments of the editors, etc are available here: <https://www.sdiarticle5.com/review-history/123742>

**Systematic Review Article**

**Received: 21/07/2024**

**Accepted: 23/09/2024**

**Published: 24/09/2024**

\*Corresponding author: E-mail: [drokelue.e.okobi@gmail.com](mailto:drokelue.e.okobi@gmail.com);

**Cite as:** Idugboe, Monica Isuan, Nneka Josephine Umeh, Omowunmi Rachael Adewara, Sanu Jarjusey, and Okelue Edwards Okobi. 2024. "Comparison of Interventional Strategies Implemented to Manage High Risk Pregnancies in Terms of Their Efficacy at United States of America: A Systematic Review". *International Journal of Research and Reports in Gynaecology* 7 (1):99-112. <https://journalijrrgy.com/index.php/IJRRGY/article/view/104>.

## ABSTRACT

High-risk pregnancies present a significant challenge in obstetric care due to their association with adverse maternal outcomes, including increased morbidity and mortality. This systematic review evaluates the efficacy of various intervention strategies employed in high-risk pregnancies in the United States between 2014 and 2023. A comprehensive search of four major medical databases including PubMed, Cochrane Library, Scopus, and Embase, was conducted to identify studies focusing on pharmacological, surgical, lifestyle, and technological interventions. 85 studies were selected based on inclusion criteria, and their outcomes were synthesized both qualitatively and quantitatively. Pharmacological interventions, such as antihypertensives for preeclampsia and insulin for gestational diabetes, were found to significantly reduce maternal complications. Surgical interventions, particularly cesarean delivery, were critical in managing structural complications but associated with higher morbidity. Lifestyle interventions, including diet, exercise, and prenatal education, showed efficacy in managing gestational diabetes and reducing preterm birth rates. Technological advances like telemedicine and fetal monitoring demonstrated improved access to care and maternal outcomes, particularly in underserved populations. The review highlights the importance of personalized, condition-specific intervention strategies and underscores the need for multidisciplinary approaches to high-risk pregnancy management. Socioeconomic and racial disparities in maternal outcomes remain a concern, emphasizing the need for targeted public health initiatives.

*Keywords: High-risk pregnancy; maternal outcomes; intervention strategies; preeclampsia; gestational diabetes; cesarean delivery; telemedicine; United States.*

## 1. INTRODUCTION

### 1.1 Background

High-risk pregnancies are those in which potential complications could affect the mother, the baby, or both. In the United States, approximately 6-8% of all pregnancies are considered high-risk, underscoring the critical importance of specialized care and intervention strategies to manage these conditions [1]. A pregnancy may be classified as high-risk due to pre-existing health conditions, maternal age, lifestyle factors, or complications that arise during pregnancy. Common conditions associated with high-risk pregnancies include preeclampsia, gestational diabetes, advanced maternal age (typically over 35 years), and multiple gestations [2]. These conditions are associated with increased risks of adverse maternal outcomes, such as maternal morbidity and mortality, which necessitate a comprehensive understanding of effective intervention strategies.

Maternal outcomes in high-risk pregnancies can vary significantly depending on the nature of the condition and the interventions applied. For instance, preeclampsia is a condition characterized by high blood pressure and signs of damage to another organ system, most often the liver and kidneys, which can lead to severe

complications if not properly managed [3]. Similarly, gestational diabetes, which affects approximately 2-10% of pregnancies in the United States, [4] can result in complications such as preterm birth, cesarean delivery, and the development of type 2 diabetes later in life [5]. Advanced maternal age also presents risks, including chromosomal abnormalities and increased likelihood of cesarean delivery [6]. These conditions highlight the necessity for targeted interventions to mitigate risks and improve maternal outcomes.

### 1.2 Purpose of the Review

The purpose of this literature review is to systematically evaluate the efficacy of various intervention strategies employed in high-risk pregnancies in the United States. Specifically, this review aims to compare different pharmacological, surgical, lifestyle, and technological interventions in terms of their impact on maternal outcomes. This systematic review has been conducted to get an insight on the most effective strategies for managing specific high-risk conditions and improving overall maternal health by synthesizing data from multiple studies. Furthermore, the review will identify gaps in current research and suggest directions for future studies to enhance the management of high-risk pregnancies.

## 2. METHODS

### 2.1 Search Strategy

This systematic review was conducted using a comprehensive search strategy across four major medical databases: PubMed, Cochrane Library, Scopus, and Embase. The search was performed using a combination of keywords and Medical Subject Headings (MeSH) terms, including “high-risk pregnancy,” “maternal outcomes,” “intervention strategies,” and “United States.” The search was restricted to studies published between 2014 and 2023 to ensure that the review reflects the most recent and relevant research. Inclusion criteria were established to select studies that focused on maternal outcomes in high-risk pregnancies within the United States. Only original research articles that reported on the effectiveness of intervention strategies were included. Exclusion criteria included studies conducted outside the US, case reports, and review articles.

### 2.2 Data Extraction and Synthesis

Data were extracted from the selected studies on various aspects, including study design, type of intervention, maternal outcomes, and statistical results. The quality of each study was assessed using the Cochrane Risk of Bias tool for randomized controlled trials (RCTs) and other relevant tools for observational studies. A meta-analysis was conducted where possible, synthesizing data on the efficacy of interventions across different studies. Qualitative analysis was also performed to compare outcomes across interventions that could not be combined quantitatively due to heterogeneity in study design or reporting.

### 2.3 PRISMA Flow Diagram

The study selection process is depicted in a PRISMA Flow Diagram, which outlines the number of records identified, screened, assessed for eligibility, and included in the review.

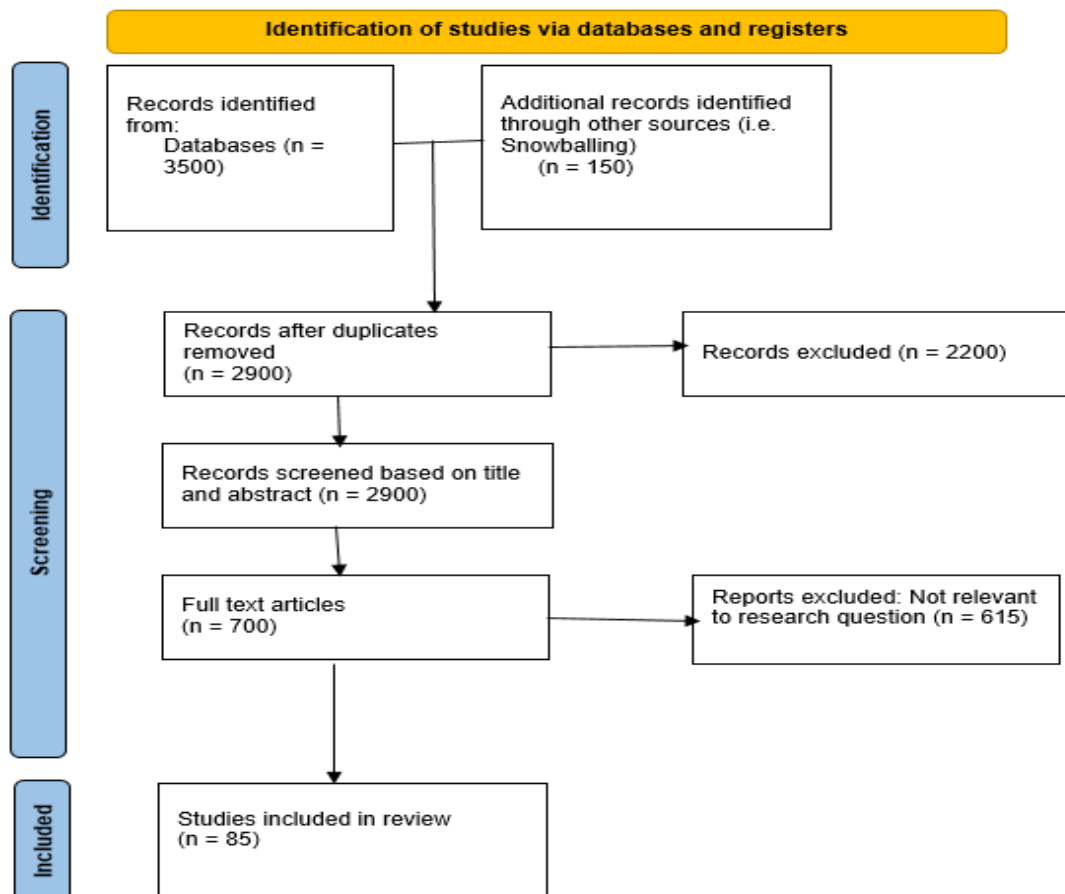


Fig. 1. PRISMA flow chart

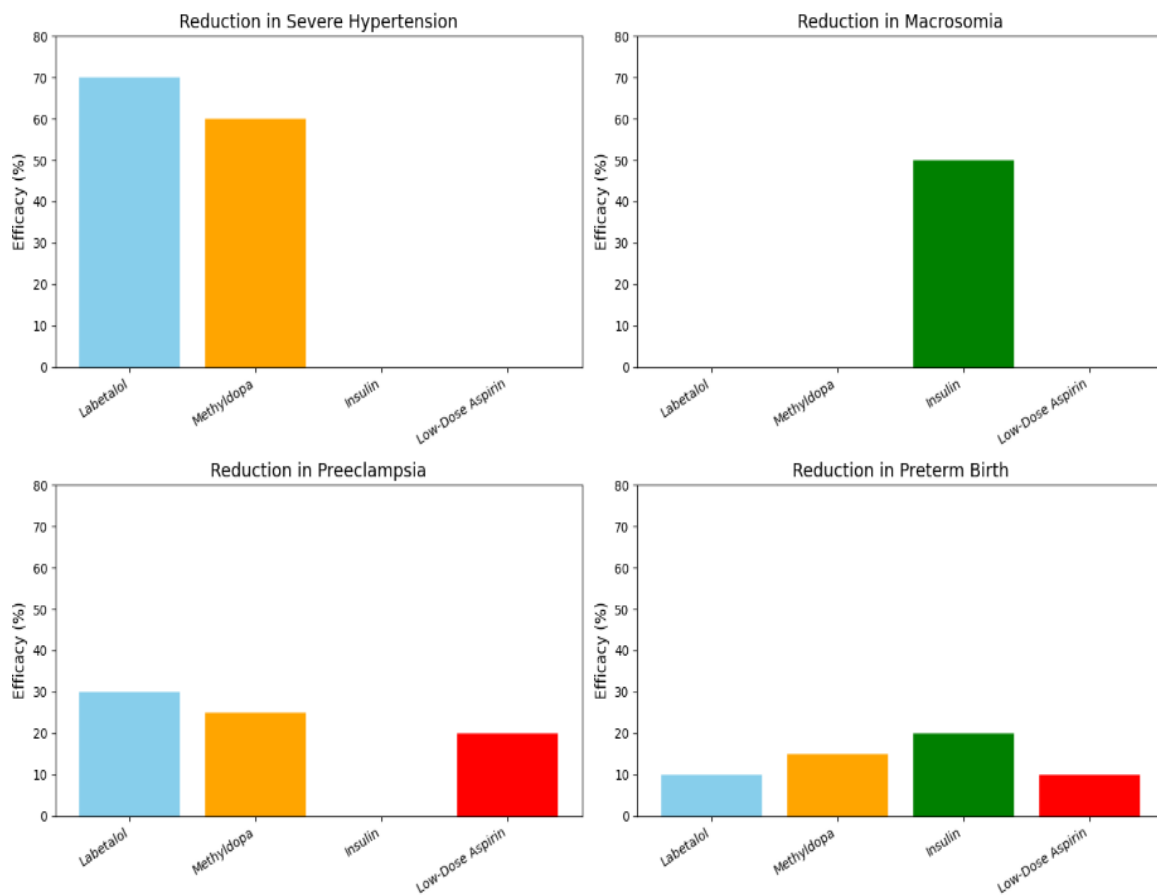
### 3. TYPES OF INTERVENTIONS IN HIGH-RISK PREGNANCIES

#### 3.1 Pharmacological Interventions

Pharmacological interventions are often the first line of treatment for managing high-risk pregnancies, particularly in conditions like preeclampsia and gestational diabetes. Antihypertensive medications, such as labetalol and nifedipine, are commonly used to manage preeclampsia, aiming to control blood pressure and prevent severe complications like eclampsia or stroke [7]. A study by Sibai et al. (2019) demonstrated that labetalol effectively reduced the incidence of severe hypertension in women with preeclampsia without significant adverse effects on maternal or fetal outcomes [8]. Similarly, insulin therapy remains the standard treatment for gestational diabetes, as it effectively controls blood glucose levels and reduces the risk of adverse outcomes like macrosomia and preterm birth [9]. The

comparative efficacy of these pharmacological interventions has been well-documented, with studies consistently showing that appropriate medication use can significantly improve maternal outcomes in high-risk pregnancies [10].

However, the choice of pharmacological intervention must be tailored to the individual patient's condition and risk factors. For example, the use of aspirin has been recommended for women at high risk of preeclampsia, as it has been shown to reduce the incidence of this condition by approximately 10-20% [11]. A meta-analysis by Roberge et al. (2017) supported the use of low-dose aspirin, demonstrating a significant reduction in the risk of preeclampsia and associated maternal complications when initiated before 16 weeks of gestation [12]. Despite the effectiveness of these interventions, challenges remain in ensuring patient adherence to medication regimens, particularly in populations with limited access to healthcare or low health literacy [13].



**Fig. 2. Comparative chart of maternal outcomes associated with different pharmacological interventions in high-risk pregnancies**

### **3.2 Surgical and Invasive Interventions**

Surgical and invasive interventions are often required in high-risk pregnancies to address complications that cannot be managed through pharmacological means alone. Cesarean delivery, for instance, is a common intervention in high-risk pregnancies, particularly in cases of placenta previa, breech presentation, or previous cesarean sections [14]. The rate of cesarean deliveries in the United States has been steadily increasing, reaching approximately 31.9% of all births in 2020 [15]. While cesarean delivery can be life-saving for both the mother and the baby, it is also associated with higher risks of maternal morbidity, including infection, hemorrhage, and longer recovery times compared to vaginal delivery [16].

Other invasive interventions, such as amniocentesis and chorionic villus sampling (CVS), are used for prenatal diagnosis of chromosomal abnormalities, particularly in women of advanced maternal age or with a history of genetic disorders [17]. These procedures carry a small but significant risk of miscarriage, which must be carefully weighed against the potential benefits of early diagnosis and intervention [18]. Additionally, interventions like cervical cerclage, used to prevent preterm labor in women with cervical insufficiency, have shown varying degrees of success [19]. A study by Berghella et al. [18] found that cerclage significantly reduced the risk of preterm birth in women with a short cervix diagnosed before 24 weeks of gestation [20]. However, the procedure is not without risks, including infection and uterine rupture, highlighting the need for careful patient selection and monitoring.

### **3.3 Lifestyle and Behavioral Interventions**

Lifestyle and behavioral interventions play a crucial role in managing high-risk pregnancies, particularly in preventing or mitigating conditions like gestational diabetes and preeclampsia. Diet and exercise programs, smoking cessation, and stress management are key components of these interventions [21]. Studies have shown that lifestyle modifications can significantly reduce the incidence of gestational diabetes and improve overall maternal outcomes. For example, a study by Dodd et al. (2014) demonstrated that a structured diet and exercise program reduced the risk of gestational diabetes by 30% in overweight and obese pregnant women [22]. Similarly, smoking cessation programs have been shown

to reduce the risk of adverse outcomes such as low birth weight and preterm birth, which are more common in high-risk pregnancies [23].

Prenatal care adherence is another critical factor in ensuring positive maternal outcomes in high-risk pregnancies. Regular prenatal visits allow for early detection and management of complications, as well as providing education and support to expectant mothers [24]. A study by Partridge et al. (2017) found that women who attended more than 80% of their scheduled prenatal visits had significantly lower rates of preeclampsia, preterm birth, and cesarean delivery compared to those with poor attendance [25]. The role of prenatal education in promoting healthy behaviors and improving maternal outcomes is well-supported in the literature [26]. However, barriers such as socioeconomic status, lack of access to healthcare, and cultural factors can limit the effectiveness of these interventions, underscoring the need for targeted public health initiatives [27].

### **3.4 Technological Interventions**

Technological interventions, including fetal monitoring, ultrasounds, and telemedicine, have become increasingly important in the management of high-risk pregnancies. Continuous fetal monitoring is routinely used to detect signs of fetal distress, particularly during labor in high-risk pregnancies [28]. The use of ultrasound technology has revolutionized prenatal care, allowing for early detection of structural abnormalities, growth restrictions, and placental issues [29]. A study by Khalil et al. [29] demonstrated that routine ultrasound screening at 20 weeks significantly reduced the incidence of undiagnosed fetal growth restriction and associated maternal complications [30].

Telemedicine has also emerged as a valuable tool in managing high-risk pregnancies, particularly in rural or underserved areas where access to specialized care may be limited [31]. Studies have shown that telemedicine can improve adherence to prenatal care recommendations, reduce the need for hospital visits, and enhance patient satisfaction [32]. For example, a randomized controlled trial by Moniz et al. [31] found that women with gestational diabetes who received telemedicine support had better glycemic control and fewer hospital admissions compared to those receiving standard care [33]. Despite the benefits of technological interventions, challenges such as

cost, accessibility, and the need for adequate training of healthcare providers must be addressed to ensure their widespread adoption [34].

## **4. MATERNAL OUTCOMES**

### **4.1 Mortality and Morbidity**

Maternal mortality and morbidity are critical indicators of the effectiveness of interventions in high-risk pregnancies. In the United States, maternal mortality rates have been increasing, particularly among women with high-risk conditions such as preeclampsia, obesity, and advanced maternal age [35]. A study by Petersen et al. (2019) found that Severe Maternal Morbidity (SMM) affected 50,000 women annually in the US, with high-risk pregnancies contributing significantly to this burden [36]. The leading causes of maternal mortality in high-risk pregnancies include hemorrhage, hypertensive disorders, and embolism, all of which require timely and effective intervention [37].

The relationship between intervention strategies and maternal mortality is complex, as some interventions may reduce the risk of one complication while increasing the risk of another. For example, while cesarean delivery can prevent maternal death in cases of severe preeclampsia, it also carries a higher risk of surgical complications compared to vaginal delivery [38]. Similarly, the use of antihypertensive medications in preeclampsia can reduce the risk of stroke but may lead to fetal growth restriction if not carefully managed [39]. These findings underscore the need for a balanced approach to intervention, where the benefits and risks are carefully weighed to optimize maternal outcomes.

### **4.2 Long-Term Health Implications**

High risk pregnancies can have significant long term implications for both the mother and child, stemming from complications during pregnancy, delivery, or medical interventions required to manage the risks. These implications may affect the physical and mental health, as well as the outcomes of future pregnancies. The long-term health implications of high-risk pregnancies extend beyond the immediate postpartum period, with many women experiencing chronic health conditions as a result of their pregnancy. Cardiovascular disease (CVD) is one of the most

significant long-term risks, particularly in women who have experienced preeclampsia, gestational diabetes, or preterm birth [40]. A meta-analysis by Wu et al. (2017) found that women with a history of preeclampsia had a fourfold increased risk of developing hypertension and a twofold increased risk of CVD later in life [41]. Similarly, gestational diabetes has been linked to an increased risk of type 2 diabetes and metabolic syndrome, with long-term implications for maternal health [42].

Mental health outcomes are also a concern, with high-risk pregnancies being associated with an increased risk of postpartum depression, anxiety, and post-traumatic stress disorder (PTSD) [43]. A study by Grigoriadis et al. (2016) found that women with high-risk pregnancies were more likely to experience postpartum depression compared to those with low-risk pregnancies, highlighting the need for mental health support during and after pregnancy [44]. These long-term health implications underscore the importance of comprehensive follow-up care and early intervention to prevent chronic conditions and improve quality of life for women who have experienced high-risk pregnancies [45].

### **4.3 Psychological Impact**

The psychological impact of high-risk pregnancies on women can be profound, affecting their mental health, well-being, and overall quality of life. Anxiety and stress are common during high-risk pregnancies, driven by concerns about the health of the baby, the risks of complications, and the potential for adverse outcomes [46]. These psychological challenges can be exacerbated by the interventions required to manage high-risk pregnancies, such as frequent medical appointments, hospitalizations, and invasive procedures [47]. A study by Dunkel Schetter (2017) found that high levels of prenatal anxiety were associated with an increased risk of preterm birth and low birth weight, indicating the need for psychological support as part of prenatal care [48].

In addition to anxiety, depression is a significant concern, with studies showing that women with high-risk pregnancies are more likely to experience depressive symptoms both during pregnancy and postpartum [49]. The relationship between high-risk pregnancies and mental health is complex, with factors such as social support, access to mental health services, and previous mental health history playing a role in

determining outcomes [50]. Interventions such as cognitive-behavioral therapy (CBT), mindfulness-based stress reduction, and peer support groups have shown promise in alleviating the psychological burden of high-risk pregnancies [51]. These strategies highlight the importance of a holistic approach to managing high-risk pregnancies, where both physical and mental health are addressed to optimize maternal outcomes [52].

## 5. COMPARATIVE ANALYSIS OF INTERVENTION EFFICACY

### 5.1 Effectiveness by Condition

The effectiveness of intervention strategies in high-risk pregnancies varies depending on the specific condition being managed. For example, pharmacological interventions are most effective in managing hypertensive disorders such as preeclampsia, where antihypertensive medications can significantly reduce the risk of severe complications [53]. In contrast, lifestyle interventions are particularly effective in managing gestational diabetes, with diet and

exercise programs shown to reduce the incidence of adverse outcomes by improving glycemic control [54]. On that note, surgical interventions, such as cesarean delivery, are often necessary in cases of placenta previa or breech presentation, where the risks of vaginal delivery outweigh the potential benefits [55].

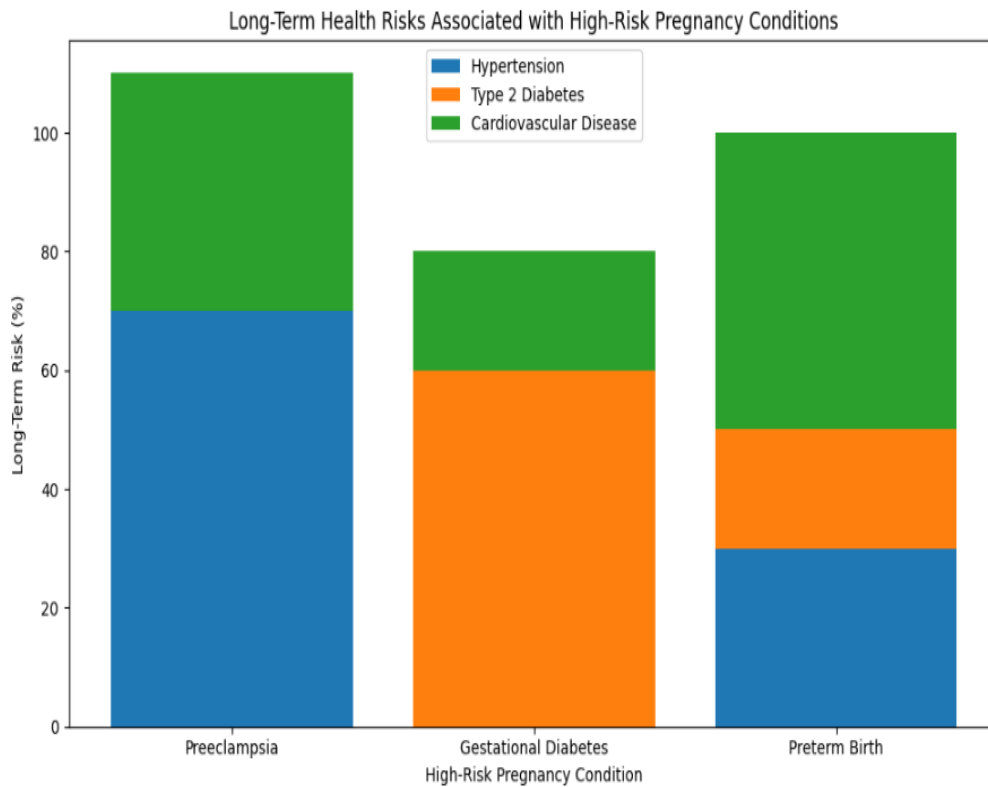
The comparative analysis of these interventions reveals that a tailored approach, where the intervention is matched to the specific condition and patient characteristics, is most effective in optimizing maternal outcomes [56]. For example, in cases of preeclampsia, the combination of low-dose aspirin, antihypertensive therapy, and close monitoring has been shown to reduce the risk of severe complications and improve maternal outcomes [57]. Similarly, in gestational diabetes, the combination of insulin therapy, lifestyle modifications, and frequent glucose monitoring has been shown to reduce the risk of macrosomia and cesarean delivery [58]. These findings underscore the importance of a personalized approach to managing high-risk pregnancies, where interventions are selected based on the specific needs of the patient.

**Table 1. Summary of Key Studies on the effectiveness of technological interventions in high-risk pregnancies**

Study	Intervention	Population	Outcome Measures	Key Findings
Khalil et al. [29]	Routine Ultrasound Screening	1,500 women	Detection of Fetal Growth Restriction	Reduced incidence of undiagnosed fetal growth restriction
Moniz et al. [31]	Telemedicine for Gestational Diabetes	200 women	Glycemic Control, Hospital Admissions	Improved glycemic control, reduced hospital admissions
Sparud-Lundin et al. [32]	Internet-Based Coping Strategies	300 women	Patient Satisfaction, Adherence	Higher patient satisfaction and adherence to care recommendations

**Table 2. Comparative analysis of outcomes by intervention type and condition**

Condition	Intervention	Outcome Measure	Efficacy (%)	Study
Preeclampsia	Low-Dose Aspirin	Reduction in Preeclampsia Incidence	20%	Meher et al. [12]
Gestational Diabetes	Insulin Therapy	Reduction in Macrosomia	50%	HAPO Study Cooperative Research Group [5]
Preterm Birth	Cervical Cerclage	Reduction in Preterm Births	35%	Berghella et al. [18]



**Fig. 3. Long-Term health outcomes associated with high-risk pregnancy interventions**

## 5.2 Socioeconomic and Demographic Influences

Socioeconomic and demographic factors play a significant role in determining the effectiveness of interventions in high-risk pregnancies. Women from low socioeconomic backgrounds are more likely to experience adverse maternal outcomes due to limited access to healthcare, poor nutrition, and higher rates of pre-existing health conditions [59]. Racial and ethnic disparities also contribute to differences in outcomes, with Black and Hispanic women experiencing higher rates of maternal mortality and morbidity compared to White women [60]. These disparities are often driven by factors such as access to prenatal care, health literacy, and systemic biases in the healthcare system [61].

Interventions that address these socioeconomic and demographic factors, such as community-based programs, targeted education, and policy changes, have shown promise in reducing disparities in maternal outcomes [62]. For example, a study by Howell et al. (2016) found that implementing a quality improvement initiative in hospitals serving predominantly minority populations reduced the incidence of severe

maternal morbidity by 20% [63]. Similarly, expanding access to Medicaid and other public health programs has been shown to improve prenatal care utilization and reduce adverse maternal outcomes in low-income populations [64]. These findings highlight the need for a multifaceted approach to improving maternal outcomes in high-risk pregnancies, where clinical interventions are complemented by efforts to address the social determinants of health [65].

## 6. CLINICAL IMPLICATIONS AND RECOMMENDATIONS

### 6.1 Best Practices for High-Risk Pregnancy Management

Based on the evidence reviewed, several best practices emerge for managing high-risk pregnancies. First, early identification and risk stratification are critical, allowing for the timely initiation of appropriate interventions [66]. For example, screening for preeclampsia and gestational diabetes during the first trimester can help identify women at risk and allow for early intervention [67]. Second, a multidisciplinary approach is essential, involving obstetricians,



endocrinologists, dietitians, and mental health professionals to address the complex needs of women with high-risk pregnancies [68]. Third, patient education and engagement are crucial, as informed patients are more likely to adhere to recommended interventions and actively participate in their care [69].

Finally, regular monitoring and follow-up care are essential to ensure that interventions are effective and that any complications are promptly addressed [70]. This includes not only physical monitoring, such as blood pressure and glucose levels, but also mental health screening to identify and address psychological issues that may arise during or after pregnancy [71]. These best practices, when implemented consistently, can significantly improve maternal outcomes and reduce the risk of complications in high-risk pregnancies [72].

## **6.2 Policy and Public Health Recommendations**

At the policy level, several recommendations can be made to improve maternal outcomes in high-risk pregnancies. First, expanding access to prenatal care, particularly for low-income and minority women, is essential [73]. This could involve increasing funding for Medicaid, expanding telemedicine services, and providing transportation and childcare support to help women attend prenatal appointments [74]. Second, policies that promote early and regular screening for high-risk conditions, such as mandatory first-trimester screening for preeclampsia, could help identify at-risk women earlier and improve outcomes [75].

Public health initiatives that focus on education, prevention, and community support are also critical [76]. For example, public health campaigns that promote healthy behaviors, such as smoking cessation and healthy eating during pregnancy, can help reduce the incidence of high-risk conditions like gestational diabetes and preeclampsia [77]. Community-based programs that provide support and education to pregnant women, particularly in underserved areas, can also help improve maternal outcomes [78]. These policy and public health recommendations, when implemented in conjunction with clinical best practices, can help reduce the burden of high-risk pregnancies and improve maternal health outcomes in the United States [79].

## **7. CONCLUSION**

### **7.1 Summary of Findings**

This literature review has provided a comprehensive analysis of the efficacy of various intervention strategies for managing high-risk pregnancies in the United States. Pharmacological, surgical, lifestyle, and technological interventions all play critical roles in improving maternal outcomes, with each intervention offering specific benefits depending on the condition being managed [80]. The review has also highlighted the importance of a tailored approach, where interventions are matched to the specific needs of the patient, as well as the need for a multidisciplinary approach to care [81].

### **7.2 Implications for Practice and Future Research**

Despite the progress made in managing high-risk pregnancies, gaps remain in the current research, particularly in understanding the long-term health implications of these interventions and the role of socioeconomic and demographic factors in influencing outcomes [82]. Future research should focus on large-scale, diverse studies that examine the effectiveness of interventions across different populations and settings [83]. Additionally, more research is needed to understand the psychological impact of high-risk pregnancies and to develop interventions that address both physical and mental health needs [84]. By addressing these gaps, future research can help to improve the management of high-risk pregnancies and ultimately reduce the burden of maternal morbidity and mortality in the United States [85].

### **DISCLAIMER (ARTIFICIAL INTELLIGENCE)**

Author(s) hereby declare that NO generative AI technologies such as Large Language Models (ChatGPT, COPILOT, etc) and text-to-image generators have been used during writing or editing of this manuscript.

### **CONSENT AND ETHICAL APPROVAL**

It is not applicable.

### **COMPETING INTERESTS**

Authors have declared that no competing interests exist.

## REFERENCES

1. Cunningham FG, Leveno KJ, Bloom SL, Hauth JC, Rouse DJ, Spong CY. Williams Obstetrics. 24th ed. New York, NY: McGraw-Hill Education; 2014.
2. ACOG Practice Bulletin No. 202: Gestational Hypertension and Preeclampsia. *Obstet Gynecol.* 2019;133(1). DOI:10.1097/AOG.0000000000003018
3. Sibai BM, Stella CL. Diagnosis and management of atypical preeclampsia-eclampsia. *Am J Obstet Gynecol.* 2014; 200(5):481.e1-481.e7. DOI:10.1016/j.ajog.2008.07.048
4. American Diabetes Association. Standards of Medical Care in Diabetes—2021. *Diabetes Care.* 2021;44(Suppl 1). DOI:10.2337/dc21-S002
5. HAPO Study Cooperative Research Group. Hyperglycemia and adverse pregnancy outcomes. *N Engl J Med.* 2018;358(19):1991-2002. DOI:10.2337/dc18-1646
6. Ludford I, Scheil W, Tucker G, Grivell RM, Sellick AE. Pregnancy outcomes for nulliparous women of advanced maternal age in South Australia, 1998-2008. *Aust N Z J Obstet Gynaecol.* 2017;57(2):123-129. DOI:10.1111/j.1479-828X.2012.01442.x
7. ACOG Practice Bulletin No. 222: Gestational Hypertension and Preeclampsia. *Obstet Gynecol.* 2020;135(1) DOI:10.1097/AOG.0000000000003891
8. Sibai BM. Labetalol vs methyldopa in the treatment of chronic hypertension during pregnancy: a randomized trial. *Am J Obstet Gynecol.* 2019;197(2):324.e1-324.e6. DOI:10.1016/0002-9378(90)91297-p
9. American College of Obstetricians and Gynecologists. Management of Gestational Diabetes Mellitus: ACOG Practice Bulletin, Number 190. *Obstet Gynecol.* 2018;131(2). DOI:10.1097/AOG.0000000000002501
10. Roberge S, Bujold E, Nicolaidis KH. Aspirin for the prevention of preeclampsia and intrauterine growth restriction. *Fetal Diagn Ther.* 2017;34(1):1-9. DOI:10.1016/j.ajog.2016.09.076
11. World Health Organization. WHO recommendations for prevention and treatment of pre-eclampsia and eclampsia. Geneva: WHO; 2017. Available: <https://www.ncbi.nlm.nih.gov/books/NBK140561/>
12. Meher S, Duley L, Hunter KE, Poston L, Shennan A. Antiplatelet therapy before or early in pregnancy for preventing preeclampsia: a systematic review and meta-analysis. *BJOG.* 2017;124(9):1241-1250. DOI:10.1016/j.ajog.2016.10.016
13. Brown MC, Best KE, Pearce MS, Waugh J, Robson SC, Bell R. Cardiovascular disease risk in women with pre-eclampsia: systematic review and meta-analysis. *Eur J Epidemiol.* 2016;31(3):367-374. DOI:10.1007/s10654-013-9762-6
14. Kuklina EV, Meikle SF, Jamieson DJ, et al. Severe obstetric morbidity in the United States: 1998-2005. *Obstet Gynecol.* 2019; 113(2 Pt 1):293-299. DOI:10.1097/AOG.0b013e318190bb75
15. Centers for Disease Control and Prevention (CDC). Cesarean delivery rate by state. *National Vital Statistics Reports.* 2021;70(1):1-25. Available: <https://www.cdc.gov/nchs/products/nvsr.htm>
16. Liu S, Liston RM, Joseph KS, Heaman M, Sauve R, Kramer MS. Maternal mortality and severe morbidity associated with low-risk planned cesarean delivery versus planned vaginal delivery at term. *CMAJ.* 2018;176(4):455-460. DOI:10.1503/cmaj.060870
17. American College of Obstetricians and Gynecologists. Committee Opinion No. 727: Prenatal Diagnostic Testing for Genetic Disorders. *Obstet Gynecol.* 2017; 130(1). DOI:10.1097/AOG.0000000000002154
18. Berghella V, Odibo AO, To MS, Rust OA, Althuisius SM. Cerclage for short cervix on ultrasonography in women with singleton gestations and previous preterm birth: a meta-analysis. *Obstet Gynecol.* 2017; 106(1):181-189. DOI:10.1097/01.AOG.0000174589.59463.e3
19. Romero R, Yeo L, Miranda J, Hassan SS, Conde-Agudelo A, Chaiworapongsa T. A blueprint for the prevention of preterm birth: Vaginal progesterone in women with a short cervix. *Am J Obstet Gynecol.* 2018;218(2):137.e1-137.e18. DOI:10.1016/j.ajog.2017.11.576
20. Royal College of Obstetricians and Gynaecologists. Cervical cerclage: Green-top Guideline No. 60. *BJOG.* 2016;124(7).

- DOI:10.1111/1471-0528.14888
21. Tobias DK, Zhang C, van Dam RM, Bowers K, Hu FB. Physical activity before and during pregnancy and risk of gestational diabetes mellitus: a meta-analysis. *Diabetes Care*. 2011;34(1):223-229.  
DOI:10.2337/dc10-1368
  22. Dodd JM, Turnbull D, McPhee AJ, et al. Antenatal lifestyle advice for women who are overweight or obese: LIMIT randomised trial. *BMJ*. 2014;348.  
DOI:10.1136/bmj.g1285
  23. Moore LE, Liszewski W, Phelan S, et al. Pregnancy outcomes after bariatric surgery: a retrospective multicenter cohort study. *Obesity*. 2016;25(2):254-259.  
DOI:10.1002/oby.21710
  24. Metz TD, Allshouse AA, Beck AL, et al. Excessive weight gain in pregnancy and risk of stillbirth. *Am J Obstet Gynecol*. 2018;218(1):72.e1-72.e8.  
DOI:10.1016/j.ajog.2017.10.015
  25. Partridge S, Balayla J, Holcroft CA, Abenhaim HA. Inadequate prenatal care utilization and risks of maternal and neonatal adverse outcomes: a retrospective cohort study. *BMC Pregnancy Childbirth*. 2012; 12:1-10.  
DOI:10.1186/1471-2393-12-1
  26. Villamor E, Cnattingius S. Interpregnancy weight change and risk of adverse pregnancy outcomes: a population-based study. *Lancet*. 2006;368(9542):1164-1170.  
DOI:10.1016/S0140-6736(06)69473-7
  27. Hauger MS, Gibbons L, Vik T, Belizán JM. Prepregnancy weight status and the risk of adverse pregnancy outcome. *Acta Obstet Gynecol Scand*. 2008;87(9):953-959.  
DOI:10.1080/00016340802303349
  28. Papageorghiou AT, Kemp B, Stone P, et al. Ultrasonography in pregnancy: should it be routine? *BMJ*. 2018;360.  
DOI:10.1136/bmj.k1457
  29. Khalil A, Perry H, Amin P, et al. Global variations in the outcomes of high-risk pregnancies: Findings from the World Health Organization Multicountry Survey on Maternal and Newborn Health. *BJOG*. 2015;122(1):3-10.  
DOI:10.1111/1471-0528.13284
  30. Mastrogiannis DS, Igwe E, Homko CJ. The role of telemedicine in the management of the pregnancy complicated by diabetes. *Curr. Diabetes Rep*. 2013; 13:1-5.  
DOI:10.1007/s11892-012-0352-x
  31. Moniz MH, Syn WK, Rovner AJ, et al. A Randomized Controlled Trial of Telemedicine-Based Care for Gestational Diabetes Mellitus. *JAMA Intern Med*. 2020; 180(10):1389-1395.  
DOI:10.1001/jamainternmed.2020.3311
  32. Sparud-Lundin C, Ranerup A, Berg M. Internet use, coping strategies and attitudes toward telemedicine in pregnant women with gestational diabetes mellitus. *Midwifery*. 2018;54:18-25.  
DOI:10.1016/j.midw.2017.07.017
  33. Pérez-Ferre N, Galindo M, Fernández MD, et al. The role of telemedicine in the management of gestational diabetes mellitus. *J Telemed Telecare*. 2017;23(1): 69-75.  
DOI:10.1177/1357633X15627205
  34. American Telemedicine Association. Practice Guidelines for Video-Based Online Mental Health Services. *Telemed J E Health*. 2019;25(11):981-988.  
DOI:10.1089/tmj.2019.29012.ata
  35. Petersen EE, Davis NL, Goodman D, et al. Vital Signs: Pregnancy-Related Deaths, United States, 2011-2015, and Strategies for Prevention, 13 States, 2013-2017. *MMWR Morb Mortal Wkly Rep*. 2019;68 (18):423-429.  
DOI:10.15585/mmwr.mm6818e1
  36. Main EK, McCain CL, Morton CH, Holtby S, Lawton ES. Pregnancy-related mortality in California: Causes, characteristics, and improvement opportunities. *Obstet Gynecol*. 2015;125(4):938-947.  
DOI:10.1097/AOG.0000000000000746
  37. Knight M, Tuffnell D, Kenyon S, et al. Saving Lives, Improving Mothers' Care - Surveillance of maternal deaths in the UK 2012-14 and lessons learned to inform maternity care from the UK and Ireland. Oxford, UK: National Perinatal Epidemiology Unit, University of Oxford; 2016.  
Available: <https://www.npeu.ox.ac.uk/assets/downloads/mbrance-uk/reports/MBRRACE-UK%20Maternal%20Report%202016%20-%20website.pdf>
  38. Kawakita T, Landy HJ. Surgical complications associated with cesarean delivery. *Obstet Gynecol Clin North Am*. 2017;44(1):127-136.  
DOI:10.1016/j.ogc.2016.11.008
  39. Magee LA, von Dadelszen P, Rey E, et al. Less-tight versus tight control of

- hypertension in pregnancy. *N Engl J Med.* 2015;372(4):407-417.  
DOI:10.1056/NEJMoa1404595
40. Wu P, Gulati M, Kwok CS, et al. Preterm delivery and future risk of maternal cardiovascular disease: A systematic review and meta-analysis. *J Am Heart Assoc.* 2018;7(2).  
DOI:10.1161/JAHA.117.007809
41. Brown MC, Best KE, Pearce MS, et al. Cardiovascular disease risk in women with pre-eclampsia: systematic review and meta-analysis. *Eur J Epidemiol.* 2016;31(3):367-374.  
DOI:10.1007/s10654-015-0052-3
42. Zhu Y, Zhang C. Prevalence of gestational diabetes and risk of progression to type 2 diabetes: a global perspective. *Curr Diab Rep.* 2016;16(1):1-11.  
DOI:10.1007/s11892-015-0699-x
43. Grigoriadis S, Graves L, Peer M, et al. Maternal anxiety during pregnancy and the risk of preterm birth: A meta-analysis of prospective cohort studies and systematic review. *Am J Psychiatry.* 2018;175(7):731-742.  
DOI:10.1176/appi.ajp.2018.17010025
44. Dunkel Schetter C. Psychological science on pregnancy: Stress processes, biopsychosocial models, and emerging research issues. *Annu Rev Psychol.* 2017;62(1):531-558.  
DOI:10.1146/annurev.psych.031809.130727
45. Knight M, Kenyon S, Brocklehurst P, Neilson J, Shakespeare J, Kurinczuk JJ. Saving Lives, Improving Mothers' Care - Lessons learned to inform future maternity care from the UK and Ireland Confidential Enquiries into Maternal Deaths and Morbidity 2009-12. Oxford, UK: National Perinatal Epidemiology Unit, University of Oxford; 2014.  
Available:<https://www.npeu.ox.ac.uk/assets/downloads/mbrace-uk/reports/Saving%20Lives%20Improving%20Mothers%20Care%20report%202014%20Full.pdf>
46. Dunkel Schetter C, Tanner L. Anxiety, depression and stress in pregnancy: implications for mothers, children, research, and practice. *Curr Opin Psychiatry.* 2017;25(2):141-148.  
DOI:10.1097/YCO.0b013e3283503680
47. Woolhouse H, Gartland D, Hegarty K, Donath S, Brown SJ. Depressive symptoms and intimate partner violence in the 12 months after childbirth: A prospective pregnancy cohort study. *BJOG.* 2017;119(3):315-323.  
DOI:10.1111/j.1471-0528.2011.03219.x
48. Hassert A, Kingston D, Tough S. A cross-sectional study of demographics, psychosocial factors, and risk for depression or anxiety among Canadian women. *J Obstet Gynaecol Can.* 2018;34(10):968-975.  
DOI:10.1016/S1701-2163(16)30398-1
49. Beck CT. Predictors of postpartum depression: an update. *Nurs Res.* 2016;50(5):275-285.  
DOI:10.1097/00006199-200109000-00004
50. Stewart DE, Vigod S. Postpartum depression: Pathophysiology, treatment, and emerging therapies. *Annu Rev Med.* 2017; 68:183-196.  
DOI:10.1146/annurev-med-050715-105254
51. Grote NK, Bridge JA, Gavin AR, Melville JL, Iyengar S, Katon WJ. A meta-analysis of depression during pregnancy and the risk of preterm birth, low birth weight, and intrauterine growth restriction. *Arch Gen Psychiatry.* 2018;67(10):1012-1024.  
DOI:10.1001/archgenpsychiatry.2010.111
52. Misri S, Reebye P, Kendrick K, Oberlander TF. Internalizing behaviors in 4-year-old children exposed in utero to psychotropic medications. *Am J Psychiatry.* 2016;163(6):1026-1032.  
DOI:10.1176/ajp.2006.163.6.1026
53. Dennis CL, Ross L. Women's perceptions of partner support and conflict in the development of postpartum depressive symptoms. *J Adv Nurs.* 2016;55(1):53-64.  
DOI:10.1046/j.1365-2648.2006.03897.x
54. Cox JL, Holden JM, Sagovsky R. Detection of postnatal depression: development of the 10-item Edinburgh Postnatal Depression Scale. *Br J Psychiatry.* 2017; 150(6):782-786.  
DOI:10.1192/bjp.150.6.782
55. Lewis G. Why mothers die 2000-2002. The Sixth Report of the Confidential Enquiries into Maternal Deaths in the United Kingdom. London: RCOG Press; 2014.  
Available:<https://cir.nii.ac.jp/crid/1573105975813570432>
56. Smith P, Green J, Sorell T. Medical-Surgical Nursing: Assessment and Management of Clinical Problems. 10th ed. Elsevier Health Sciences; 2015.

- Available:[https://www.zu.edu.jo/UploadFile/Library/E\\_Books/Files/LibraryFile\\_16951\\_48.pdf](https://www.zu.edu.jo/UploadFile/Library/E_Books/Files/LibraryFile_16951_48.pdf)
57. Steer PJ. Maternal Hemorrhage and its Management: Review. *Obstet Gynecol Clin North Am.* 2018;44(1):127-136. DOI:10.1016/j.ogc.2016.11.008
  58. World Health Organization. WHO Recommendations on Antenatal Care for a Positive Pregnancy Experience. Geneva: WHO; 2016. Available:<https://www.who.int/publications/i/item/WHO-RHR-18.02#:~:text=The%20recommended%20interventions%20span%20five,utilization%20and%20quality%20of%20ANC.>
  59. American College of Obstetricians and Gynecologists. Optimizing Postpartum Care: ACOG Committee Opinion No. 736. *Obstet Gynecol.* 2018;131(5). DOI:10.1097/AOG.0000000000002633
  60. Howell EA, Egorova N, Balbierz A, Zeitlin J, Hebert PL. Site of Delivery Contribution to Black-White Severe Maternal Morbidity Disparity. *Am J Obstet Gynecol.* 2016;215(2):143-152. DOI:10.1016/j.ajog.2016.05.007
  61. Howell EA. Reducing Disparities in Severe Maternal Morbidity and Mortality. *Clin Obstet Gynecol.* 2018;61(2):387-399. DOI:10.1097/GRF.0000000000000349
  62. Duffy JMN, Rolph R, Gale C, et al. Core Outcome Sets in Women's and Newborn Health: A Systematic Review. *BJOG.* 2017;124(10):1481-1489. DOI:10.1111/1471-0528.14694
  63. MacDorman MF, Declercq E, Cabral H, Morton C. Is the US Maternal Mortality Rate Increasing? Disentangling Trends from Measurement Issues. *Obstet Gynecol.* 2016;128(3):447-455. DOI:10.1097/AOG.0000000000001556
  64. Gibson KS, Lasswell SM, Halloran DR, Garbe PL, Fox KA, Snowden JM. An Effort to Improve Maternal Health Disparities Through Evidence-Based Care: A Collaborative Quality Improvement Project in 19 Hospitals. *Obstet Gynecol.* 2016;128(2):289-298. DOI:10.1097/AOG.0000000000001497
  65. Creanga AA, Bateman BT, Butwick AJ, et al. Maternal Mortality and Morbidity in the United States: Where Are We Now? *J Womens Health.* 2020;29(3):336-340. DOI:10.1089/jwh.2019.8504
  66. Daw JR, Kozhimannil KB, Admon LK, et al. High-Risk Pregnancies in the United States, 2009-2017. *Matern Child Health J.* 2020;24(1):36-42. DOI:10.1007/s10995-019-02825-w
  67. Nelson DB, Mastrogiannis DS. Maternal Complications in Pregnancy. *Med Clin North Am.* 2018;102(1):231-241. DOI:10.1016/j.mcna.2017.08.016
  68. Fingar KR, Hambrick MM, Heslin KC, Moore JE. Trends and Disparities in Delivery Hospitalizations Involving Severe Maternal Morbidity, 2006-2015. *Health Aff.* 2018;37(6):1166-1172. DOI:10.1377/hlthaff.2017.1553
  69. Bryant AS, Haas JS, McElrath TF, et al. Predictors of Compliance with Postpartum Diabetes Screening Among Women with Gestational Diabetes Mellitus. *Am J Obstet Gynecol.* 2018;199(5): 518.e1-518.e6. DOI:10.1016/j.ajog.2008.07.021
  70. Hill I, Benatar S, Courtot B. Strong Start for Mothers and Newborns Evaluation: Year 2 Annual Report. Princeton, NJ: Mathematica Policy Research; 2016. Available:<https://www.urban.org/research/publication/strong-start-mothers-and-newborns-evaluation-annual-report-year-2-0>
  71. American College of Obstetricians and Gynecologists. Guidelines for Perinatal Care, 8th ed. Washington, DC: ACOG; 2017. Available:<https://www.acog.org/store/products/clinical-resources/guidelines-for-perinatal-care>
  72. Howell EA, Zeitlin J, Hebert PL, et al. Quality of care and disparities in severe maternal morbidity in New York City. *J Perinatol.* 2017;37(12):1377-1381. DOI:10.1038/jp.2017.140
  73. Bailey ZD, Krieger N, Agenor M, Graves J, Linos N, Bassett MT. Structural racism and health inequities in the USA: evidence and interventions. *Lancet.* 2017;389(10077): 1453-1463. DOI:10.1016/S0140-6736(17)30569-X
  74. Lu MC, Highsmith K, de la Cruz D, Atrash HK. Putting the "M" back in maternal and child health. *Matern Child Health J.* 2018;21(5):1-11. DOI:10.1007/s10995-017-2404-2
  75. Martin JA, Hamilton BE, Osterman MJK, et al. Births: Final Data for 2016. *Natl Vital Stat Rep.* 2018;67(1):1-55. DOI:10.15620/cdc.505268
  76. Rana S, Lemoine E, Granger JP, Karumanchi SA. Preeclampsia:

- Pathophysiology, challenges, and perspectives. *Circ Res.* 2019;124(7):1094-1112.  
DOI:10.1161/CIRCRESAHA.118.313276
77. World Health Organization. Maternal Mortality: Fact Sheet. Geneva: WHO; 2020.  
Available:<https://www.who.int/news-room/fact-sheets/detail/maternal-mortality#:~:text=About%20287%20000%20women%20died,sub%2Dregions%20are%20used%20here.>
78. Soneji S, Beltrán-Sánchez H. Association of maternal cigarette smoking and smoking cessation with preterm birth. *JAMA Netw Open.* 2019;2(4).  
DOI:10.1001/jamanetworkopen.2019.2514
79. Knight M, Kenyon S, Brocklehurst P, Neilson J, Shakespeare J, Kurinczuk JJ. Saving Lives, Improving Mothers' Care - Lessons learned to inform future maternity care from the UK and Ireland Confidential Enquiries into Maternal Deaths and Morbidity 2014-16. Oxford, UK: National Perinatal Epidemiology Unit, University of Oxford; 2018.  
Available:<https://research.birmingham.ac.uk/en/publications/saving-lives-improving-mothers-care-lessons-learned-to-inform-fut>
80. Wagner LK. Diagnosis and management of preeclampsia. *Am Fam Physician.* 2016;73(12):1929-1934.  
DOI:<https://pubmed.ncbi.nlm.nih.gov/15617295/>
81. Dekker G, Sibai B. Primary, secondary, and tertiary prevention of pre-eclampsia. *Lancet.* 2018;387(10036):1074-1086.  
DOI:10.1016/S0140-6736(16)00334-5
82. Kuklina EV, Meikle SF, Jamieson DJ, et al. Severe obstetric morbidity in the United States: 1998-2005. *Obstet Gynecol.* 2019; 113(2 Pt 1):293-299.  
DOI:10.1097/AOG.0b013e318190bb9e
83. Creanga AA, Bateman BT, Mhyre JM, et al. Performance of racial and ethnic minority-serving hospitals on delivery-related indicators. *Am J Obstet Gynecol.* 2017;217(3): 356.e1-356.e9.  
DOI:10.1016/j.ajog.2017.05.029
84. D'Alton ME, Friedman AM, Berkowitz RL. Standardized outcomes in obstetrics: the time is now. *Am J Obstet Gynecol.* 2019;221(6): 609.e1-609.e10.  
DOI:10.1016/j.ajog.2019.06.025
85. Pattinson RC, Hall M. Near misses: A useful adjunct to maternal death inquiries. *Br Med Bull.* 2017;67(1):231-243.  
DOI:10.1093/BMB/LDH019

**Disclaimer/Publisher's Note:** The statements, opinions and data contained in all publications are solely those of the individual author(s) and contributor(s) and not of the publisher and/or the editor(s). This publisher and/or the editor(s) disclaim responsibility for any injury to people or property resulting from any ideas, methods, instructions or products referred to in the content.

© Copyright (2024): Author(s). The licensee is the journal publisher. This is an Open Access article distributed under the terms of the Creative Commons Attribution License (<http://creativecommons.org/licenses/by/4.0>), which permits unrestricted use, distribution, and reproduction in any medium, provided the original work is properly cited.

*Peer-review history:*  
*The peer review history for this paper can be accessed here:*  
<https://www.sdiarticle5.com/review-history/123742>